



Light is More

+33 (0) 9 83 62 64 64

48, avenue Parmentier, 75011 Paris

www.light-is-more.com / hello@light-is-more.com



LIGHT IS MORE

— Lighting designers and consultants —

Expert lighting design agency

Light is More is a company which merges the talents of three lighting specialists, an architect and designer, a lighting engineer and an optic and electronics engineer.

Three complimentary's independent minds

This collaboration allows us to practice their common passion through transversal fields like architecture, scenography and design. To answer these topics of various scales, each of the associates brings together a network of partners and craftsmen mixing diversified technologies. We have a combined know-how, so we can find creative, innovative and artistic solutions to make all your projects desires and dreams come true.

Where lights enliven the space and bring emotion

We are inspired by that which surrounds us, by day and by night, by the ordinary and the extraordinary, so we can create an environment in constant evolution. Our work is fully aware of the science behind the light and the effect it has on humans and spatial environment. The weather, the time, the sun and the moon, the seasons, the physical aspects inside and the outside, are all parameters that physically affect our emotions, our performances, our daily circadian rhythm.

An artistic and engineering collective of light experts

Our inspiration comes from the past, present and future. Creations of the past are inspirations for a new and innovative future. We work with shadows, light, shapes and materials to create unique and sensitive light experiences. Facing a new project, we are observant and attentive to your wants, your needs, your constraints. We analyze your space, your customs, your objectives and mix all that to find the spot-on idea, the real live entity. We look for solutions to ensure it's feasible and adaptable with the budget and timeline of the project. Our analysis and technical answers are the guarantee of a reliable lighting, on conformity with the established norms.

Light is elusive, our expertise is essential to awaken your spaces.



EXPERTISES

— Where light enliven the space and bring emotion. —

ARCHITECTURE

- .Schematic design,
Design development
- .Illuminance calculation
- .Device recommendation
- .Construction document
- .Final focusing



*Hospitality, offices, museums &
galleries, residential, retails,
landscapes, etc...*

SCENOGRAPHY

- .Creation
- .Programmation
- .Production
- .Installation



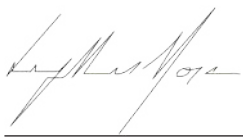
*Exhibitors & fairs,
live performances, fashion
shows, etc...*

DESIGN

- .Conception
- .Creation
- .Production
- .Edition



*Lamps, mirrors,
furniture, etc...*



PAULINE DAVID

— Architect, Designer, Lighting designer —

Pauline David, 30, is graduated from the **National School of Architecture in Nancy**, as well as a master of **global design, specializing in glass, design and architecture**. At 23, she joined Lumières Studio, and gained experience alongside Odile Soudant. Fascinated by the place of light in our daily lives, the light design becomes obvious to her.

In 2014, she joined forces with two light enthusiasts: a light manager and an optical and electronic engineer. Together, they were created, **"Light is More", an arty lighting group**. This collaboration allows them to practice their common passion through transversal fields.

Their skills allow them to find creative, innovative and artistic solutions to serve projects.

His 10 years of experience offer him an **expertise and a sensitive approach** to magnify achievements ranging **from architecture to scenography and design**.

Pauline is currently collaborating with the agencies of Laura Gonzalez, Ramy Fischler and Rodolphe Parente for **palace, boutique-boutique, luxury residence and institutional projects** around the world for prestigious clients.

In parallel, she offers, via the **"Light is Design" Atelier** (light-is-design.com), collections of lighting that she likes to integrate into projects.

"I am inspired by what surrounds me, from day to night, from everyday life to exception, to create an environment in perpetual evolution." Pauline David.

In **2020**, she joins the **ACE**, one of the most important association of lighting designers.

Pauline loves to design spaces and products that evolve over time, her sensitive approach to light linked to architecture and design make her creations a **sensory experience** where **the body and its emotions take central place**.



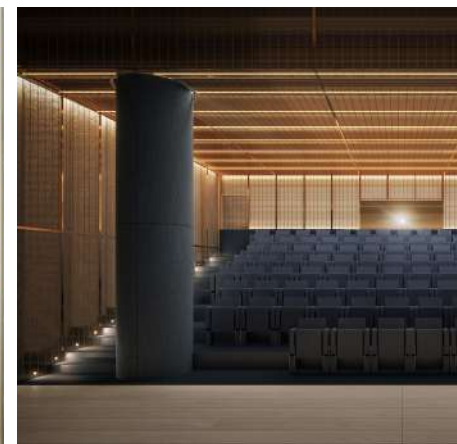
"We favor sensitive creations, based on the balance of shadows and lights, shapes and materials."

Pauline David

50 MONTAIGNE

Common areas of an office building, Paris
Architect : RF studio

In progress



APARTMENT H

Highlighting of apartment, Paris

November 2019





APPARTMENT H

Highlighting of apartment
Paris

APPARTEMENT H

Paris - France

Client : Private client

Type : Residential

Domain : Achitectural lighting

Surface : 350 m²

Amount of material lighting : 30 000€ HT

November 2019



Le Monde

PHILIPPE CONTICINI

Highlighting of the pastry, Paris
Rue de l'Annonciation, Paris

November 2019



Light & Space

MON CONCEPT HABITATION

Highlighting of offices
Paris

October 2019



Laura Gonzalez

LA PERGOLA ESTIVALE

Highlighting of AD intérieurs exhibition, Paris
Architect : Laura Gonzalez

September 2019



HARRODS - ZILLI

Highlighting of the shop Zilli at Harrod's, London
Architect : Rodolphe Parente

October 2018 - March 2019



STAIRWAY HONOUR

— Highlighting of stairway of honour
Town Hall of the 2nd area, Paris, France —

November 2017



RF studio

OPEN FASTLAB

Offices of Open, Levallois Perret, France
Architect : RF studio

December 2016 - May 2017



RF studio

TWITTER HEADQUARTER

Twitter european headquarter, Paris, France
Architect : RF studio

October 2015 - June 2016

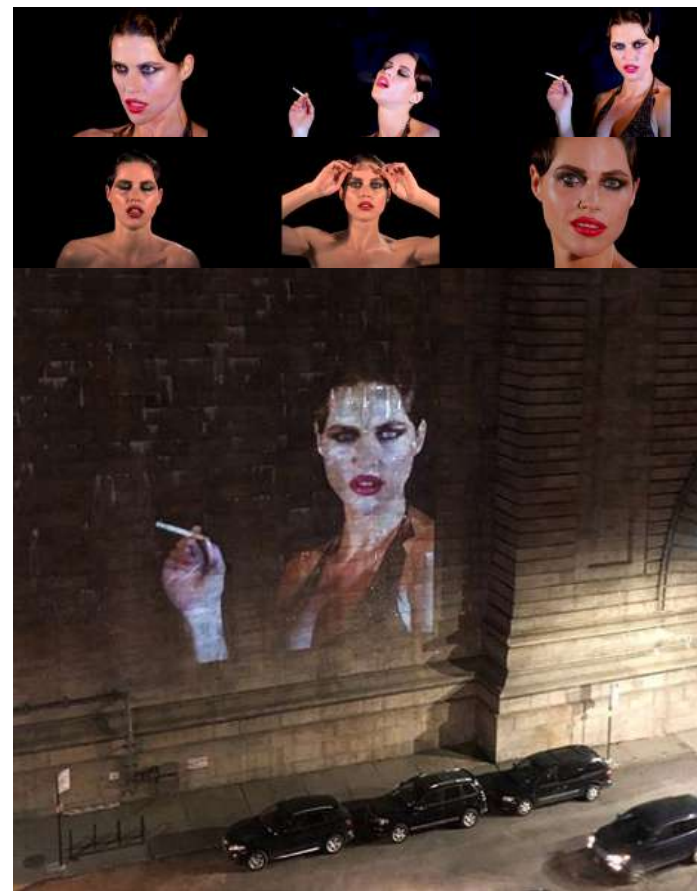


Light & Space

DIGITAL FAIRY TALE

— Director of photography
Artist : Zoé Duchesne —

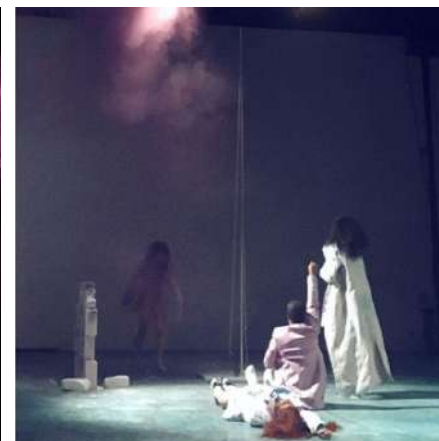
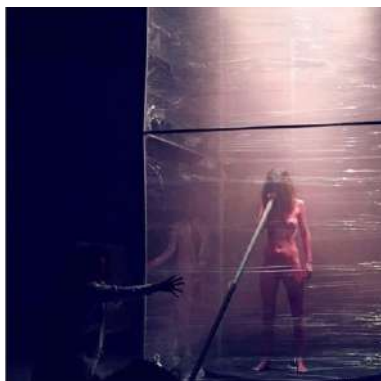
April 2019



VERTICAL STRIKE

Lighting scenography of the show named Vertical Strike
Artist : Sarah Trousche

May 2018



Sarah Trousseau

FACCIA A FACCIA

Scenography of the exhibition named Faccia a Faccia
Artist : Sarah Trousseau

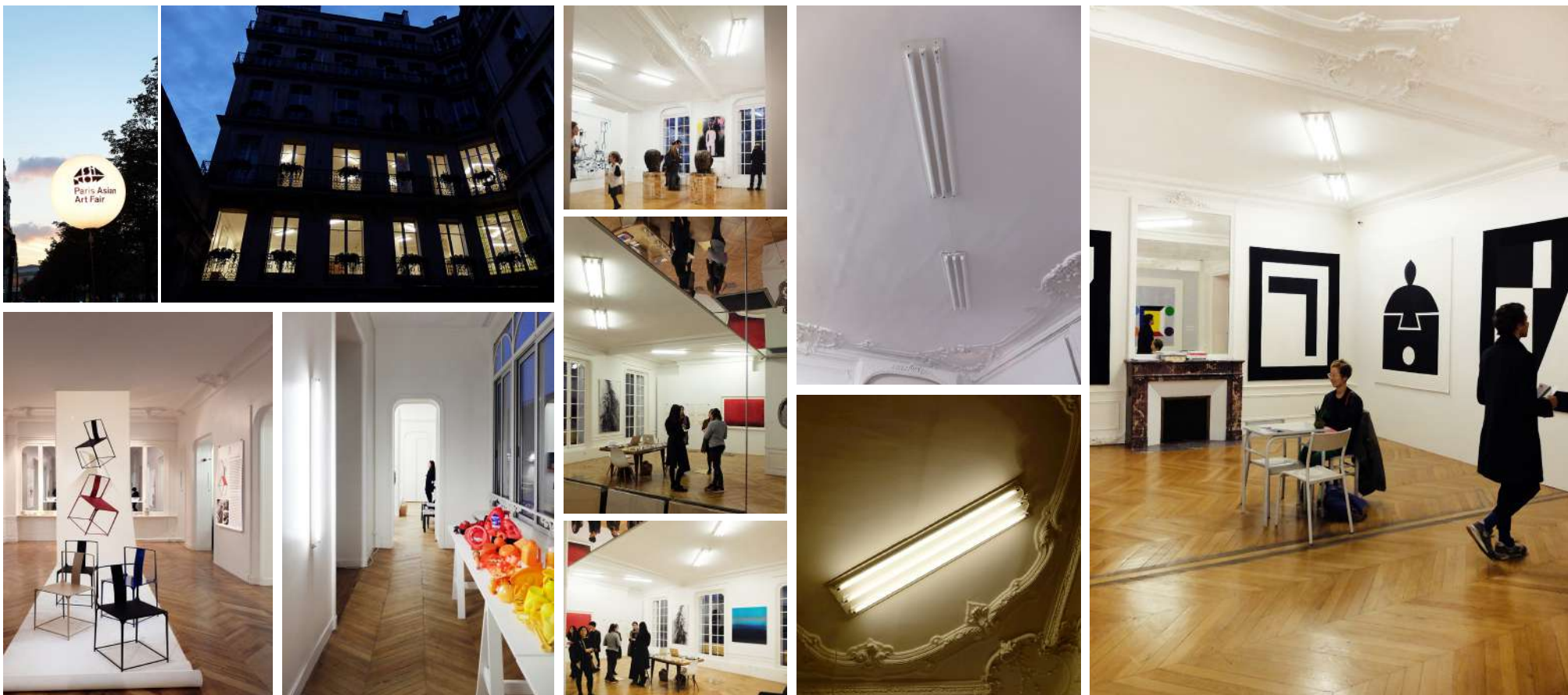
March 2017



ASIA NOW

Scenography of the fair, FIAC OFF, Paris
Scenographs : Pauline David & Vincent Le Bourdon

October 2016/2017/2018/2019



Lighting

NEHERA FASHION SHOW

Lighting scenography
Ready-to-wear Autumn/Winter 2016, Paris Fashion Week

March 2016



UNE NUIT UNIQUE

— Scenography lighting of the event, Paris —

December 2014



Light Mapping

HELIOS FESTIVAL

Mapping video projection
Avignon

Concours 2020



FBC SAINT-HONORÉ

Private residence terrace

Architecte : Alberto Pinto / Paysagiste : Madison Cox

2018

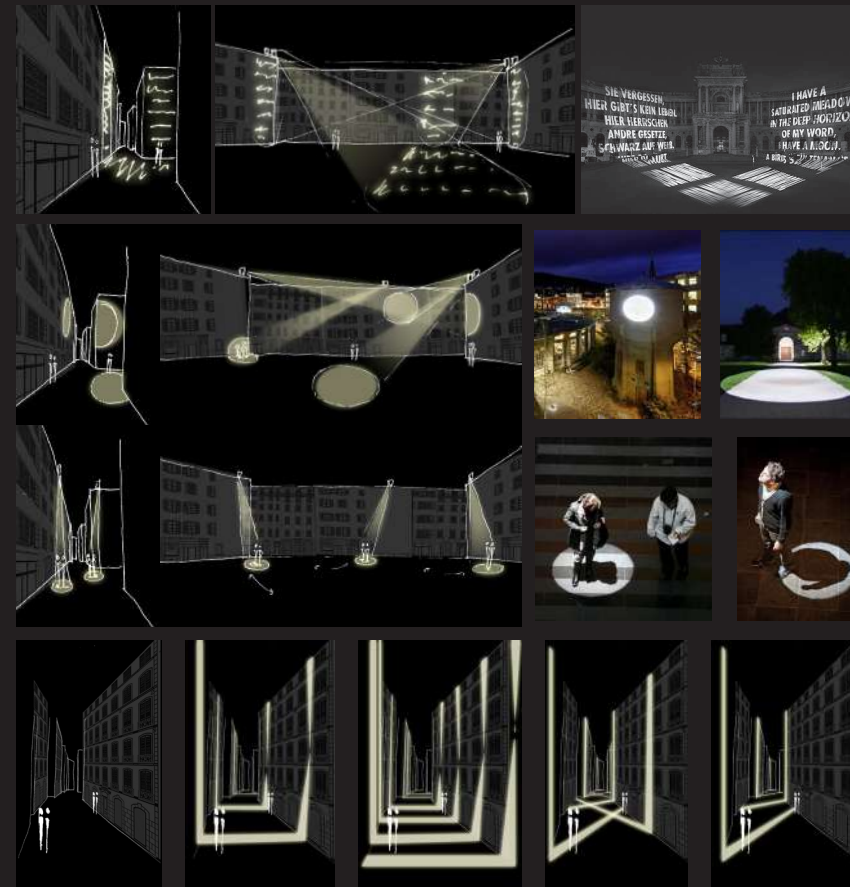
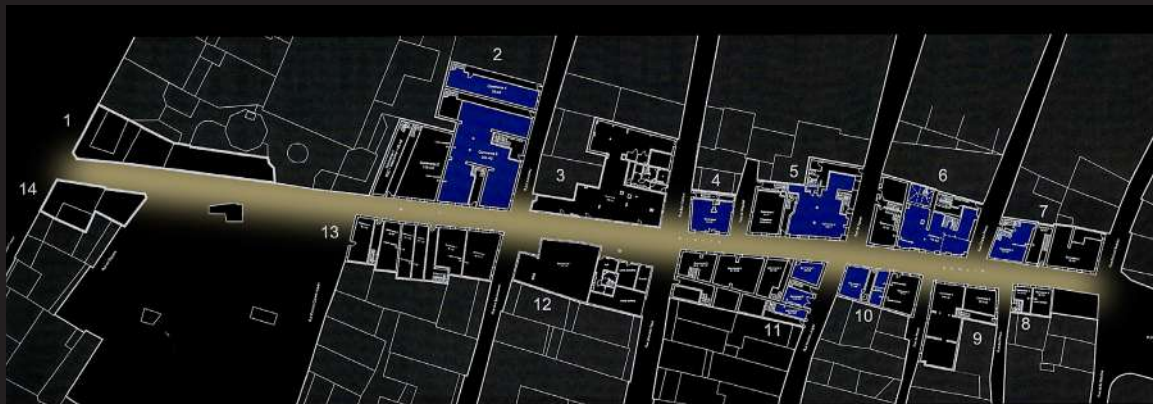


Lighting design

ÉQUERRE DISTRICT

Lighting design of the entire district, Toulon, France

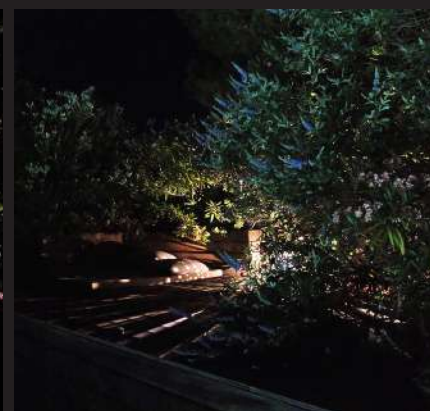
Competition 2016



AN ISLAND GARDEN

— Lighting design of the garden, Calvi, Corse —

July 2015



Le Perchoir

LE PERCHOIR

Highlighting of the cocktail bar terraces

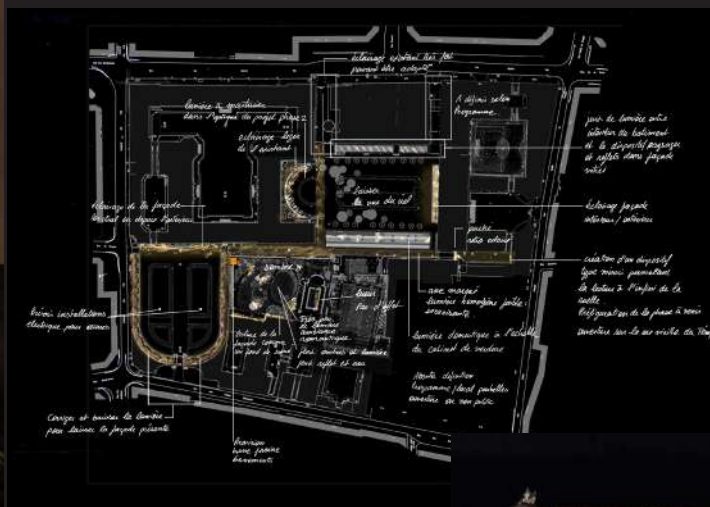
June 2014 - November 2015



NATIONAL ARCHIVES

Lighting design of the garden and facades, Paris, France
Collaboration Lumières studio

2011 - 2015

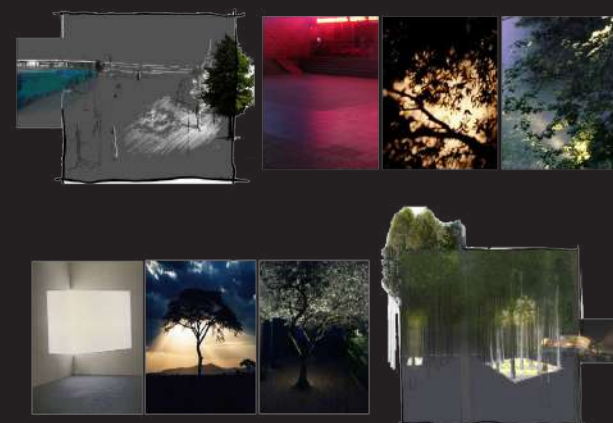
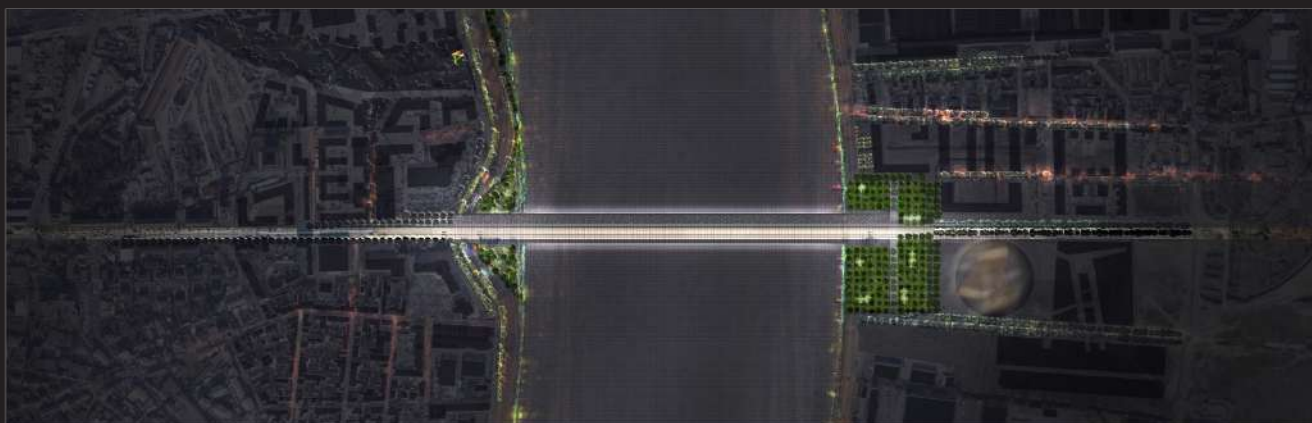


Light & Space

JJBOSC BRIDGE

Pont JJBosc, Bordeaux, France
Architect : OMA, Collaboration Lumières studio

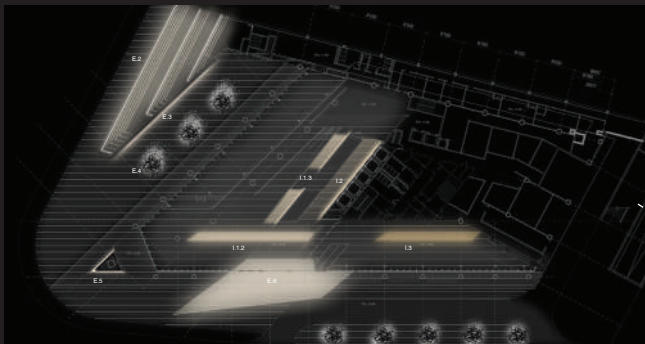
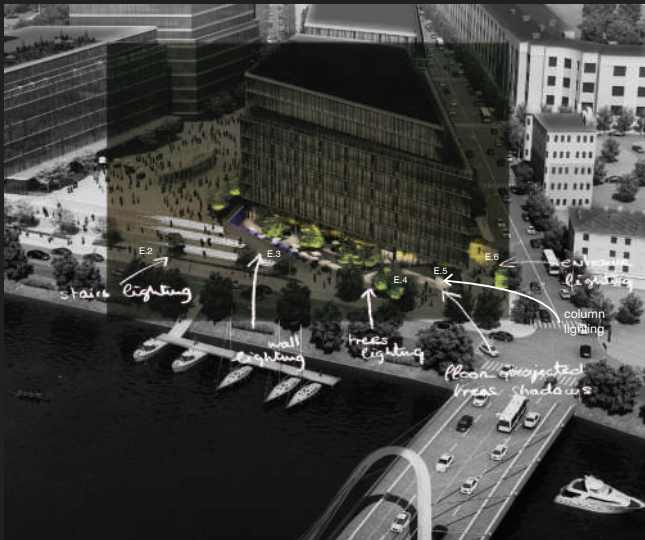
Competition 2014



TRINITY PLACE

Lighting design of the building and place, St Petersburg
Collaboration Lumières studio

Schematic design phase 2012





REFERENCES

— They trust us —

AD
Intérieurs

Rodolphe Parente
Architecture • Design

RF Studio

**PALAIS
DE TOKYO**

linkcity

YMER&MALTA


LAURA GONZALEZ

PHILIPPE CONTICINI
PARIS

LADURÉE
Paris

Galerie
Lafayette

mitte
media
festival

Chelsfield

zone[s]

Uber

Cartier

Baccarat

 **JLL**

RICHEMONT

triode³ design

ODEON
Théâtre de l'Europe

Harrods

**PRIVATE
CHOICE**

LEO KUELS COLLECTION

**HERVÉ PERDRIOLLE
GALERIE**

**studio | cui
cui**

Kure
B A Z A A R



ZILLI
BLEECKER



NEHERA

LE PERCHOIR

open
WE EMPOWER
YOUR DIGITAL WORLD



KADIST



FULTON
RÉVONS LA VILLE

Light is More

ARTISTIC DIRECTION

Pauline David
pauline@light_is_more.com

TECHNICAL DIRECTION

Matthieu Cretin
matthieu@light-is-more.com

EVENTS DIRECTION

Joan Ospital
joan@light-is-more.com

Address.

48, avenue Parmentier, Paris 11, France

Phone

+33 (0) 9 83 62 64 64

Website

www.light-is-more.com

